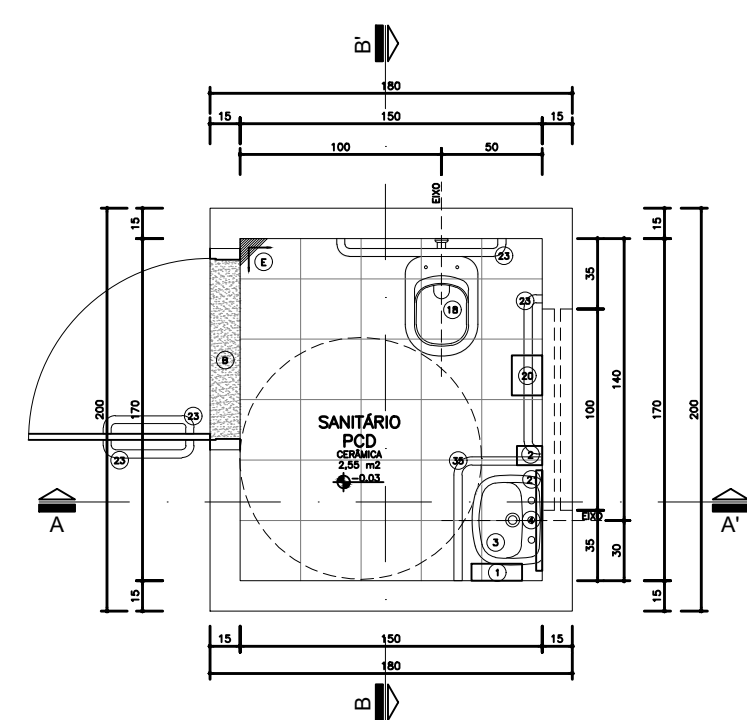
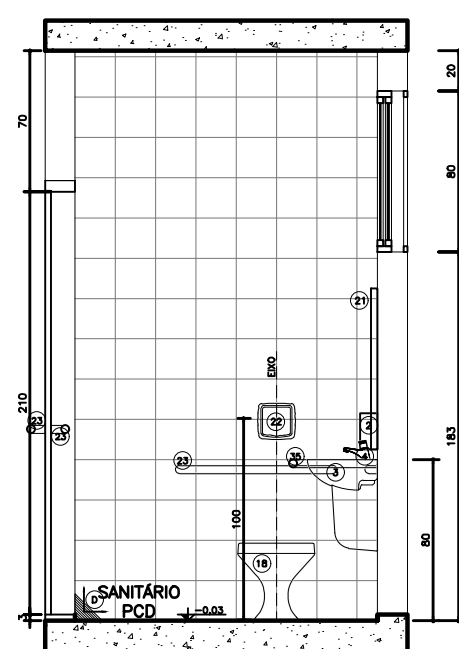


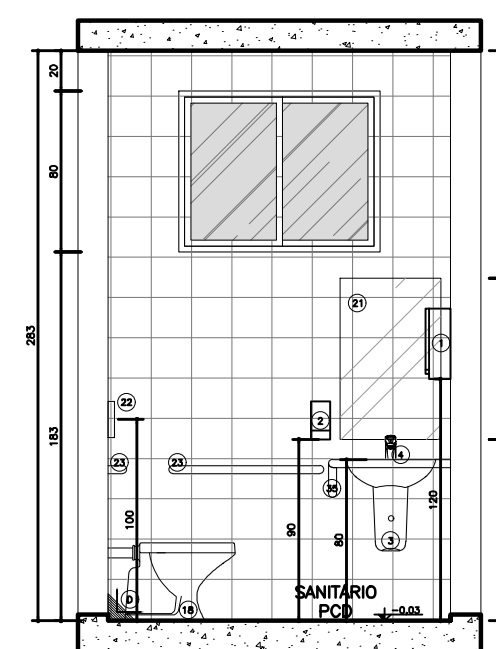
UBS TIPO II – BAIRRO NOVO CENTRO



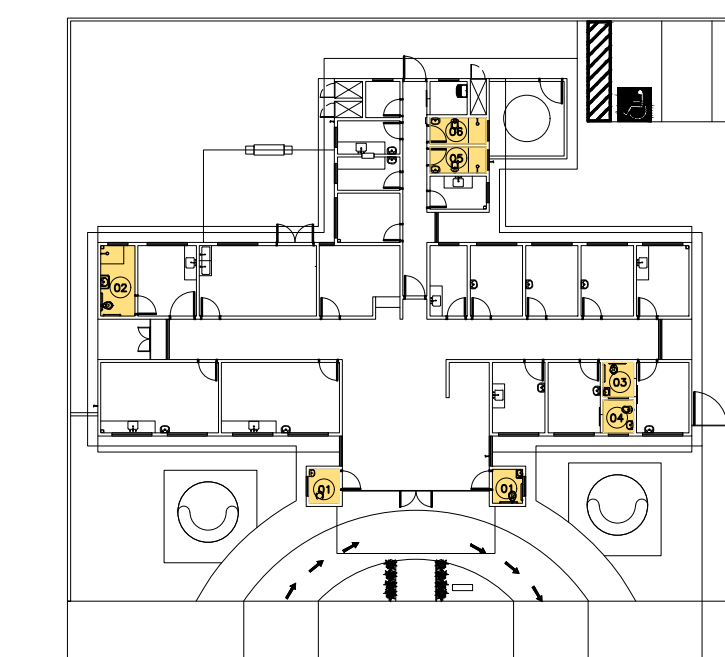
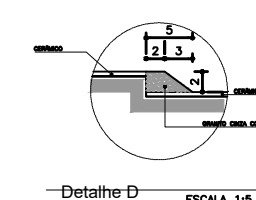
—Planta Baixa—



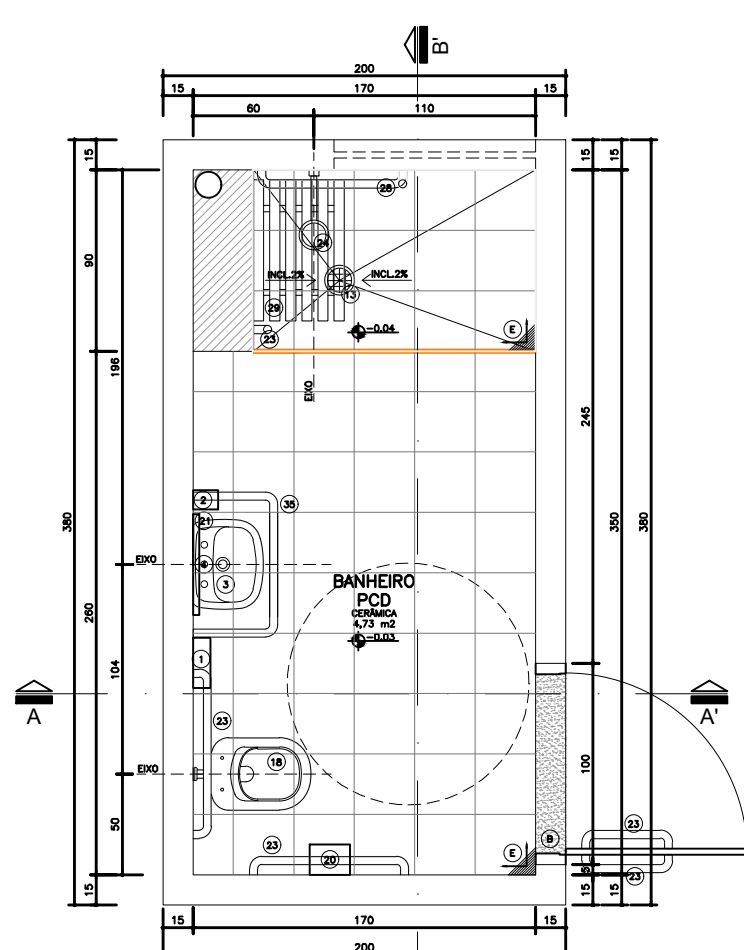
S AA'



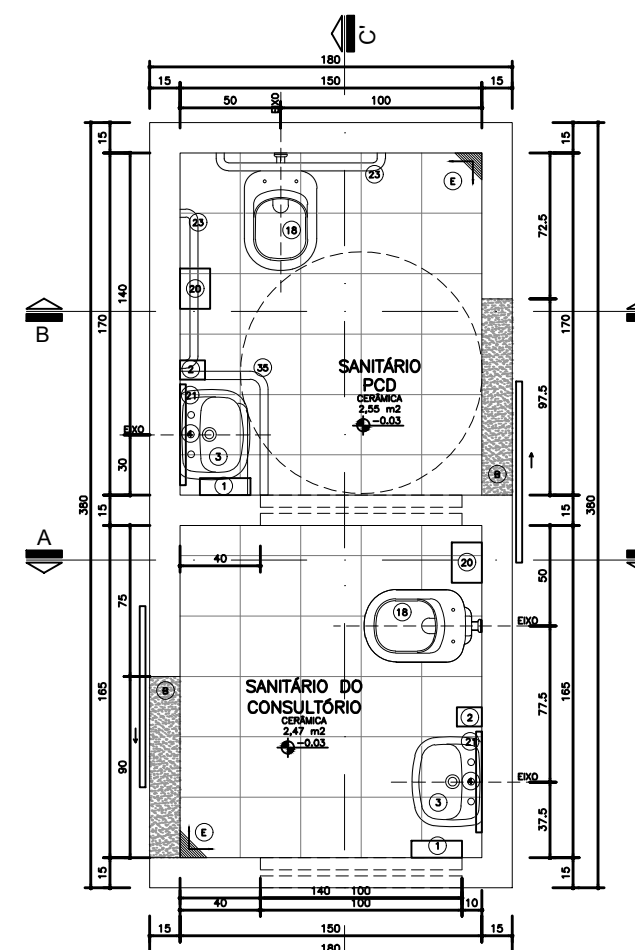
S — BB'



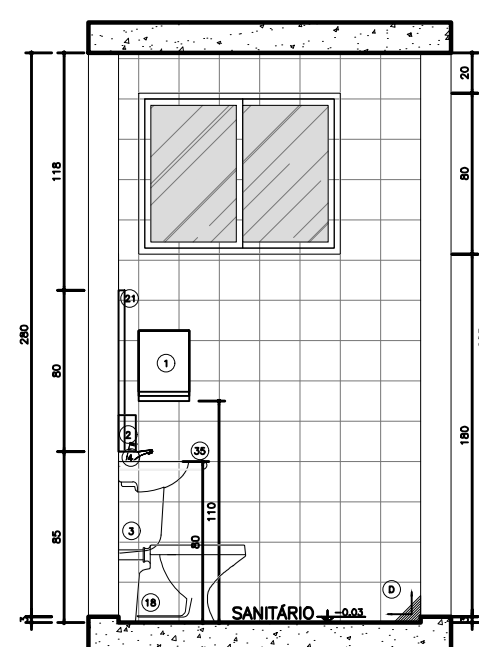
UTS 2
Nivel 0,00



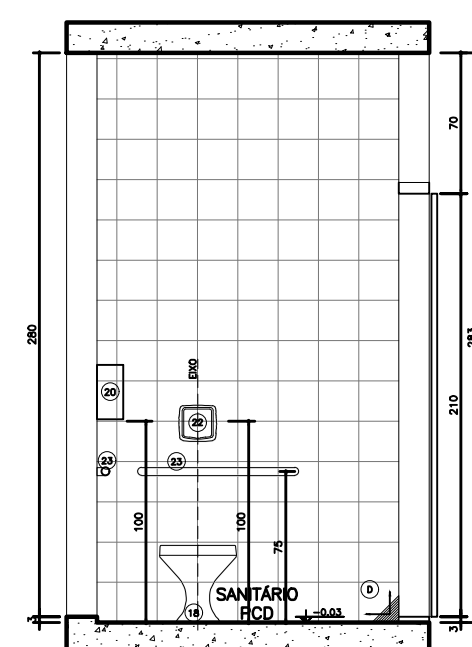
Planta Baixa



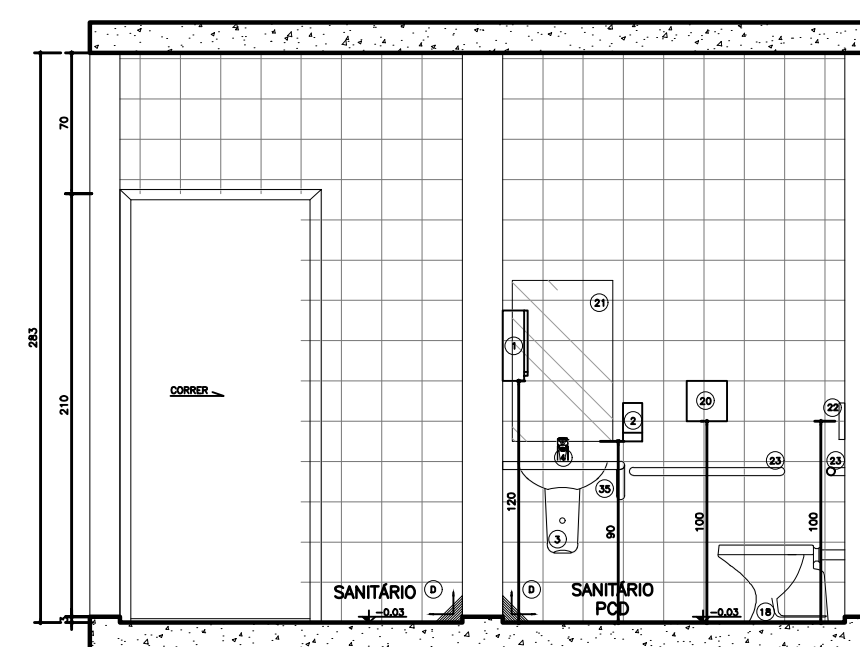
Planta Baixa



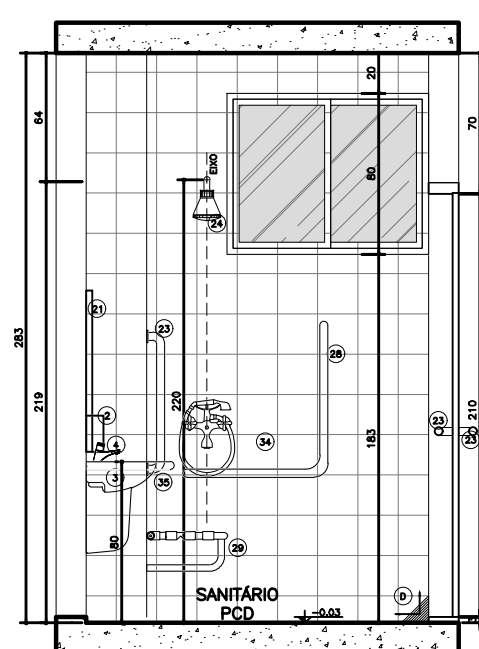
AA' ..
Arboreas 3 e 4
Bonheiro



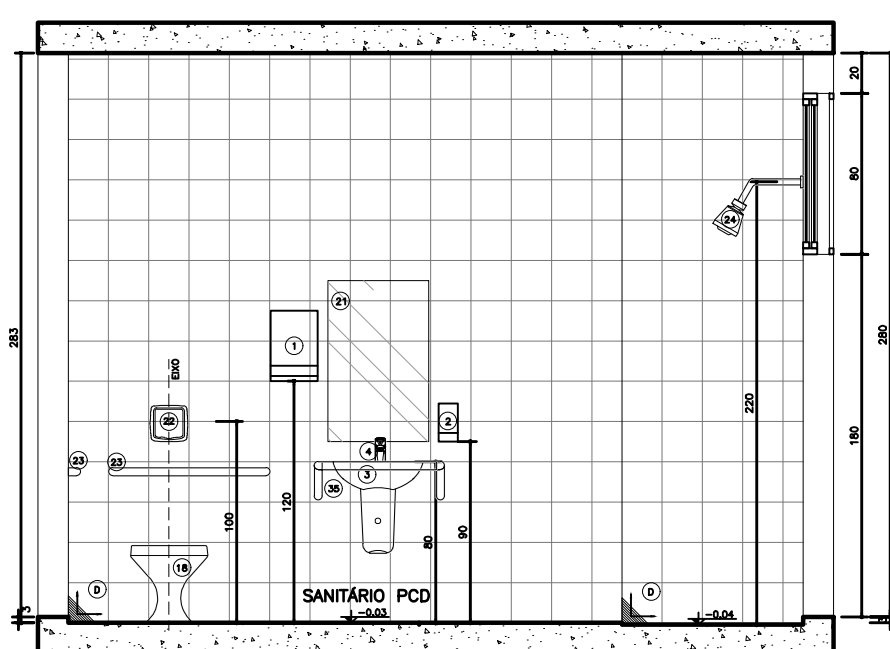
S BB'



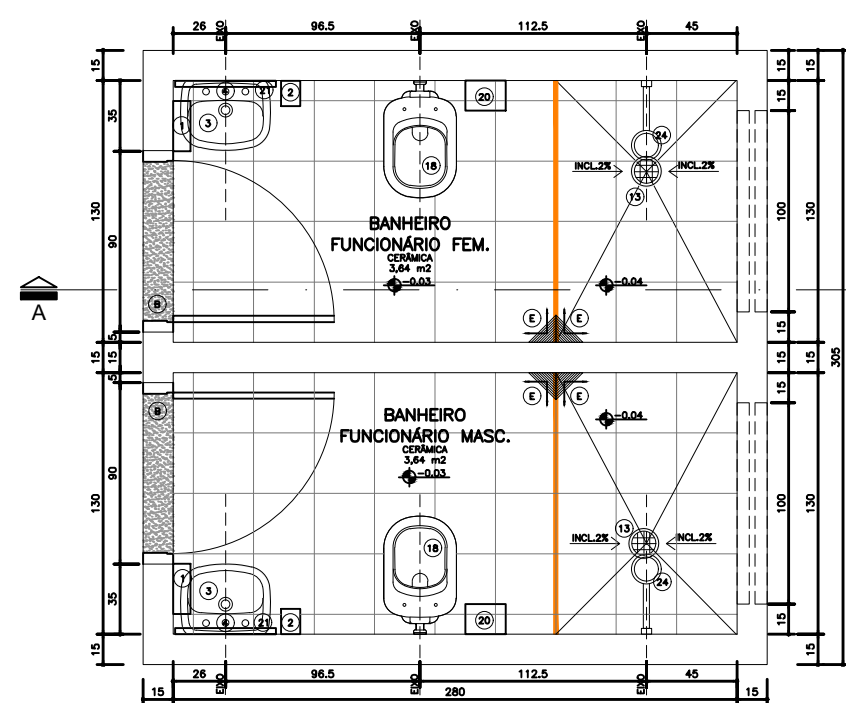
S CC' Ambly



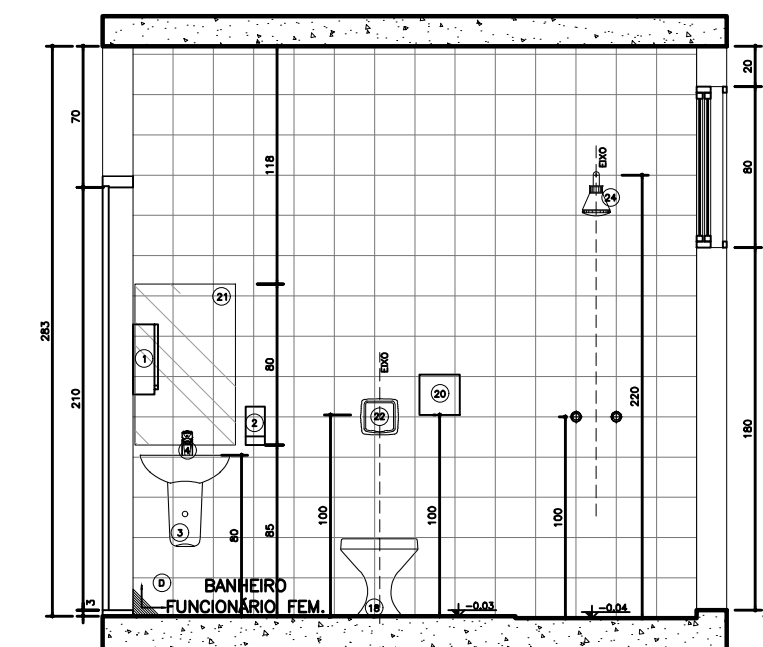
S AA'



S — BB'



Planta Baixa



S AA'

- [illegible]

SECRETARIA MUNICIPAL DE OBRAS
DEPARTAMENTO DE ENGENHARIA E ARQUITETURA

SECRETARIO DE OBRAS:	BRUNO MÁRCIO MOREIRA ALMEIDA
RESPONSÁVEL TÉCNICO:	RODRIGO DE PAULA OLIVEIRA
ENDEREÇO:	AVENIDA HELENA SOARES VIANA, COM MG 20, BAIRRO: NOVO CENTRO, CIDADE DE SANTA LUZIA, MG

PREFEITURA MUNICIPAL DE SANTA LUZIA
ADM. DELEGADO CHRISTIANO XAVIER
UNIDADE BÁSICA DE SAÚDE - NOVO CENTRO

NÚMERO	DISCIPLINA	Data:	JUNHO / 2020
	CONTEÚDO DA PRÁTICA	Folha:	10 / 15
	Detalhamento Sanitário	Revisão:	